



WREATHS ACROSS AMERICA DAY – DECEMBER 17, 2022

Each year, Wreaths Across America coordinates wreath-laying ceremonies at more than 3,400 locations across the United States, at sea or abroad. We remember and honor all our military veterans that have paid the ultimate sacrifice for our freedoms.

We invite you to join Wreaths Across America by sponsoring a veterans' wreath at a cemetery near you, volunteering or donating to a local sponsorship group. Please visit WreathsAcrossAmerica.org to volunteer, donate, or sponsor a wreath to honor an American hero.



TOYS FOR TOTS

Hunt Military Communities proudly supports the U.S. Marine Corps Reserve Toys for Tots program each holiday season. Donation drops off stations will be available at several HMC communities across the nation to collect presents and toys for children in need.

Toys for Tots is a 73-year-old national charitable program run by the U.S. Marine Corps Reserve that brings holiday joy to more than seven million disadvantaged children each season. HMC is proud to support this holiday tradition to give back to our communities in a safe and accessible way. The primary goal is to help bring joy to the season and send a message of hope and support to all those in need. Donations given to Toys for Tots directly impact children and families in communities throughout the country.

If you would like to make a donation or learn more about the program, please visit ToysForTots.org.

OUR CEO'S MESSAGE

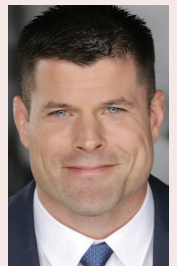
Dear HMC Residents,

We'll be celebrating the beginning of a new year in just a few short weeks. During this holiday season and throughout the year, we appreciate the service and sacrifice you and your families make. With deployments or long training missions, our Service Members miss out on many special occasions during the holiday season. In support of our families, our communities are doing special service projects this holiday season to show our gratitude for all you do day in and day out. We are also supporting those in need. Donation drop-off stations have been established at many HMC communities across the nation to collect presents and toys for needy children as part of the U.S. Marine Corps Reserve Toys for Tots program. We are also encouraging employees and residents to participate in Wreaths Across America to support their wreath-laying efforts at military cemeteries across the country. On behalf of everyone here at Hunt Military Communities, I want to take this time to wish you all a very safe and happy Holiday season and a healthy and happy 2023.

Semper Fidelis,



Brian Stann
President and CEO
Hunt Military Communities



COMMUNITY ANNOUNCEMENTS

Community Advisory Board

Calling all CABs!!! Join us in making a difference in your community. The Community Advisory Board (CAB) is a formally established board made up of representatives from each of our neighborhoods and a designated Navy and OMC representative.

The mission of the CAB is to provide an effective forum where the interests of our residents are represented and considered by sharing information and discussing concerns through regular monthly meetings. Our goal is to establish a connection within our communities by promoting open communication with resident representatives.

If you are interested in being a community advisory board member or would love to contribute to your community in any way, we would love to hear from you. Please contact your Resident Services Office at 808-784-7800 and speak with your Community Manager TODAY!

CONTACT INFORMATION

EAST RSO (HALSEY TERRACE, RADFORD TERRACE)

Office Hours: Monday – Friday 8:00 AM – 5:00 PM

Phone: 808-784-7800 opt. 2, then 1

Email: EastRSO@HuntCompanies.com

WEST RSO (MOANALIA, HALAWA, MCGREW POINT)

Office Hours: Monday – Friday 8:00 AM – 5:00 PM

Phone: 808-784-7800 opt. 2, then 2

Email: WestRSO@HuntCompanies.com

CENTRAL RSO (PEARL CITY PENINSULA, CAMP STOVER, HELE MAI)

Office Hours: Monday – Friday 8:00 AM – 5:00 PM

Phone: 808-784-7800 opt. 2, then 3

Email: CentralRSO@HuntCompanies.com

CATLIN RSO (CATLIN PARK, MALOELAP, DORIS MILLER, PMRF)

Office Hours: Monday – Friday 8:00 AM – 5:00 PM

Phone: 808-784-7800 opt. 2, then 4

Email: CatlinRSO@HuntCompanies.com

SOUTH RSO (FORD ISLAND, MAKALAPA, HOKULANI, ALL OTHERS)

Office Hours: Monday – Friday 8:00 AM – 5:00 PM

Phone: 808-784-7800 opt. 2, then 5

Email: SouthRSO@HuntCompanies.com

LEASING – ALOHA CENTER & CATLIN OFFICE

Office Hours: Monday – Friday 8:00 AM – 5:00 PM

Phone: 808-784-7800 opt. 1

Email: NavyHawaii@HuntCompanies.com



PET OF THE MONTH

Krystah Jean Zamudio's pup, Blueberry



EMPLOYEE SPOTLIGHT

Raeleen Salinas

Raeleen is a huge zombie fan; she also loves making arts and crafts. When asked what she loves about her job, she said "I love the atmosphere of the job and working with military families at PMRF"



WREATHS ACROSS AMERICA DAY - DECEMBER 17TH



NATIONAL PEARL HARBOR
REMEMBRANCE DAY - DECEMBER 7TH

COMMUNITY IMPROVEMENTS

Exterior Home Painting throughout Ohana Military Communities!

We are excited to announce a project that will enhance the beauty of our communities. Over the next year several communities will undergo exterior painting. These communities include Makalapa, Luke Field, Landing, Battleship Cove, Catlin Park, Maloelap, and Hele Mai.

All homes included in this beautification project will include pressure washing of the home followed by a full paint job. The Resident Services Office will provide each residence with proper notification of the scheduling of their home. Pressure washing will take approximately 1 – 2 days, followed by 3 – 4 days of painting. The scheduled workday will be 7:30 AM - 4:30 PM.

In preparation for the work to take place, once residents receive notice, we ask that you:

- Keep all windows closed for the duration of the project.
- Please move objects such as patio furniture, signs, or toys so that they do not touch the home and there is room for the contractors to work. Any patio furniture can remain on the back patio or lanais, but we ask that you move it to the center of the lanai area, so that the crew, if needed, can cover it. No items should be attached to the home per the resident handbook; but if so, they will need to be removed.
- Please be aware that some work may hinder access to some entry exit doors. If this occurs, it will be discussed with the resident prior to ensure that one entry/exit is available.
- Please instruct all family members to stay clear of the work areas during the project.
- Park your vehicle in the garage or on the street. Driveways will be open for resident use at the end of each workday.

IMPORTANT COMMUNITY EVENTS

Radford Terrace Community Park Grand Opening

On Wednesday, November 2, 2022, kids of all ages, sizes, and abilities ran inside to play at the new Radford Terrace Community Playground. The community gathered to celebrate the grand opening of the long-awaited play area.

Ohana Military Communities partnered with Inspired Play and the local USO to make this a joyous event for our families. Families had the opportunity to meet the playground designers and office team. They were provided with refreshments, goodie bags, and a fun time.



MEET OUR FRIENDLY STAFF

EAST RSO (HALSEY TERRACE, RADFORD TERRACE)

Ashley Dumas
Community Manager

Liliana Santana
Resident Service Specialist

Trineka Martin
Resident Service Specialist

WEST RSO (MOANALIA, HALAWA, MCGREW POINT)

Rachael DeCaires-Houston
Community Manager

Megan Skye
Resident Service Specialist

Eva Futch
Resident Service Specialist

Jamelle Simmons
Resident Service Specialist

CENTRAL RSO (PEARL CITY PENINSULA, CAMP STOVER, HELE MAI)

Marin Witt
Community Manager

Lester Tabucbuc
Resident Service Specialist

Jennifer Dela Cruz
Resident Service Specialist

Jennifer Rowan
Resident Service Specialist

CATLIN RSO (CATLIN PARK, MALOELAP, DORIS MILLER, PMRF)

Patricia Best
Community Manager

Kate Behm
Resident Service Specialist

Rachena Sar
Resident Service Specialist

Raeleen Salinas
Resident Service Specialist

SOUTH RSO (FORD ISLAND, MAKALAPA, HOKULANI, ALL OTHERS)

Feliza Shield
Community & Executive
Homes Manager

Emma Horstman
Resident Service Specialist

Amoreena Goody
Resident Service Specialist

Abigail Rodriguez-Vargas
Resident Service Specialist

LEASING – ALOHA CENTER & CATLIN OFFICE

Ashley Maples
Leasing Manager

Amaris Hildago
Leasing Specialist

Alejandra Lopez
Leasing Specialist

Kassie Pressler
Leasing Specialist

Mercel Davis
Leasing Specialist

Brianna Coleman
Leasing Specialist

Morgan Bauer
Leasing Specialist

Alissa Rodgers
Leasing Specialist

Matt Desselle
Leasing Specialist

Jennifer Ai
Leasing Specialist

Shaun Owen
Leasing Specialist

Christina Banks
Leasing Specialist

2022

DECEMBER

SUN	MON	TUE	WED	THU	FRI	SAT
				01 Civil Air Patrol Day	02 Holiday Pet of the Month Starts Facebook	03
04	05	06	07 National Pearl Harbor Remembrance Day	08	09	10
11 Holiday Pet of the Month Ends Facebook	12 Holiday Decorating Contest Starts Facebook Ugly Sweater Photo Booth Starts All Resident Services Offices 8 – 5 PM	13	14	15	16 Ugly Sweater Photo Booth Ends All Resident Services Offices 8 – 5 PM	17 Wreaths Across America
18 First Night Of Hanukkah Holiday Decorating Contest Ends Facebook	19	20	21 First Day Of Winter	22 Jingle & Mingle Ornament Decorating Moanalua Community Center - 2500 Radford Dr. 4 – 6 PM	23	24 Christmas Eve
25 Christmas Day	26 Last Night Of Hanukkah OFFICE CLOSED	27	28	29	30	31 New Year's Eve

