

April 2021

# LUCKY WE LIVE HAWAII

## Our President's Message



April is a special month for our HMC families as we celebrate the Month of the Military Child. It is a time to

honor the sacrifices made by military families worldwide and especially the dependent children of military members serving at home and overseas. Since 9/11, over 2 million children have had a parent deployed overseas, and come have had a parent deployed multiple times. Military youth of today promise to be some of the most active and involved populations in our nation's history. It is only fitting that we take time to celebrate them in a special way. Thank you to our military families with children who continue to teach and inspire our future leaders.

Best Regards,  
John Ehle  
President - Hunt Military Communities



OhanaNavyCommunities.com



'OHANA

HUNT MILITARY COMMUNITY

## Follow Us



@OHANANAVYMILITARYCOMMUNITIES



@OHANANAVYMC



Follow us on Instagram:

<https://www.instagram.com/>



Connect with us on Facebook:

[www.facebook.com/  
OhanaNavyMilitaryCommunities](https://www.facebook.com/OhanaNavyMilitaryCommunities)

### Ohana Military Communities –Useful Contact Information:

Maintenance Requests: (808) 839-HELP (4357)

Property Contact Email:

[navyhawaii@huntcompanies.com](mailto:navyhawaii@huntcompanies.com)

# EMPLOYEE SPOTLIGHT FOR MARCH



Meet Cheryl-Anne, an RSS here at Ohana Military Communities!

\*She was born in Frankfurt, Germany.

\*She has volunteered in Uganda where she helped build schools with her parents.

Cheryl-Anne says, "As a military dependent, what I love most about my job is the opportunity to make a difference in the lives of our military families!"

## WOMEN'S HISTORY MONTH!

To celebrate Women's History Month, our employees paid homage to a famous woman in history, Rosie the Riveter, who was a cultural icon of World War II, representing the women who worked in factories and shipyards during World War II, many of whom produced munitions and war supplies.



## WE ARE HERE FOR YOU! - OFFICE CONTACTS

We are still practicing social distancing and we also ask that you wear a mask when coming to the office!

### West RSO

2500 Radford Drive, Honolulu, HI 96818

(808) 839-8640

WestRSO@HuntCompanies.com

### East RSO

620 Pool St. Honolulu, HI 96818

(808) 839-8620

EastRSO@HuntCompanies.com

### Catlin RSO

3349 Catlin Drive, Honolulu, HI 96818

(808) 839-8660

CatlinRSO@HuntCompanies.com

### Central RSO

100 Lehua Ave., Pearl City, HI 96782

(808) 839-8670

(808) 840-3574 (Camp Stover Office)

CentralRSO@HuntCompanies.com

### South RSO

298 Main Street, Honolulu, HI 96818

(808) 839-8630

southRSO@huntcompanies.com

For Emergency and Urgent Maintenance  
Contact: (808) 839-4357

For Routine Maintenance: Please submit via  
the RentCafe Resident app!

ohananavycommunities.com



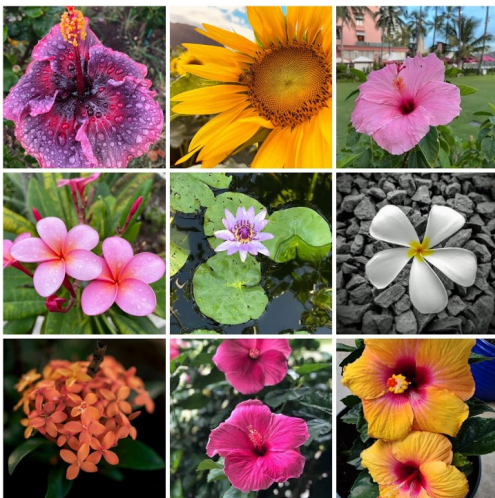


# March Social Media Contest Highlights

## Rainbows of Hawaii Photo Contest



## Spring Flower Contest!



Mahalo to all our residents who participated in the online contests! Be on the look out for more fun social media contests this month.

# TIPS FOR PREVENTING MOLD & MILDEW

A guide for residents of our community



- ✓ Do not block or cover any heating, ventilation, or air conditioning ducts.
- ✓ Whenever possible, maintain a temperature between 60 to 80 degrees Fahrenheit.
- ✓ To allow an exchange of air and permit sunlight to enter, air out your home when weather is warm and dry. Run the fan on your furnace to help circulate fresh air.
- ✓ In damp, humid, or rainy weather, keep windows and doors closed.
- ✓ Clean and dust on a regular basis. Use environmentally safe household cleaners. Regular vacuuming and mopping removes household dirt and debris that contribute to mold growth. A vacuum cleaner with a HEPA filter will help remove mold spores.
- ✓ Periodically clean and dry the walls and floors around the sink, bathtub, shower, toilet, windows and patio doors using a common household disinfecting cleaner. On a regular basis, wipe down and dry areas where moisture sometimes accumulates, such as countertops, windows, and windowsills.
- ✓ Use the bathroom fan when bathing or showering and allow the fan to run until all excess moisture has been vented from the bathroom.
- ✓ Use the exhaust fan in your kitchen when cooking or while the dishwasher is running and allow the fan to run until all excess moisture has been vented from the kitchen.
- ✓ If you have a clothes dryer, clean the lint filter after each use and promptly report any damage to the vent connection. If condensation forms within the closet, wipe it dry. Dry damp clothing as quickly as possible.
- ✓ Limit houseplants to a reasonable number to limit excess humidity and limit molds that could grow on the soil surface. Avoid over-watering.
- ✓ If you clean up a spill on your carpeting, blot the area dry.
- ✓ Do not overfill closets or storage areas. Overcrowding restricts airflow.

## What to report to the Community Management Office:

- Any leak or water damage
- Any malfunction in your heating, ventilation, or air conditioning system
- Windows or doors that don't open or close properly
- Any areas of visible mold (except very small areas that respond to routine cleaning)
- Musty or moldy odors
- Health issues which you think are linked to the air quality within your home or community



# Renters Insurance

## ARE YOU COVERED?



**OHANA MILITARY COMMUNITIES ENCOURAGES ALL RESIDENTS TO OBTAIN RENTERS INSURANCE.**

### **RENTERS INSURANCE IS NOT INCLUDED AS PART OF YOUR LEASE!**

This means in an unexpected event YOU may be held responsible for damages.  
A renters insurance policy is an affordable way to protect yourself from the financial burden of unexpected events!

## **WHAT DOES RENTERS INSURANCE COVER?**

**BASIC RENTERS INSURANCE TYPICALLY COVERS THE FOLLOWING:**

### **1. PERSONAL PROPERTY**

If your personal belongings are damaged in a covered event, your renters insurance company will cover the cost of the damaged items up to your policy's limit. A covered event is the damaging event named in your policy e.g. fire, flood, theft, etc.

### **2. LIABILITY**

Liability covers damages to the rental property or if someone is injured and you are blamed/responsible for the event. e.g. an accidental kitchen fire OR your toilet overflows and damages the flooring OR your pet bites a guest or neighbor

### **3. ADDITIONAL LIVING EXPENSES**

If you are unable to stay in your home due to a covered event, additional living expense coverage can help pay for accommodations, such as your hotel stay while your home is undergoing repairs.

## **DO I HAVE ENOUGH COVERAGE?**

As a renter, it's important to understand your policy and how much protection it offers. Ensure you review your policy carefully and ask your insurance agent if you are unsure so they can help you adjust it to fit your needs. Even if you don't think your personal belongings is worth much, renters insurance is ALWAYS a good idea!

Flood and mold coverage is not included in basic renters insurance policies. We recommend obtaining these coverages as added protection. With Hawaii's warm/humid climate, it is the ideal environment for mold growth. Mold remediation can be costly!



# OMC SAFETY CONNECTION

At Ohana Military Communities, your safety is our top priority. By sharing information and working together as a community to look out for each other, we lessen the danger of being victims of preventable crimes. Let's work hand-in-hand in our fight against crime because together, we are safer.

Home protection always starts with you. While we have dedicated safety teams and neighborhood security measures set in place, keep in mind that your property and valuables are yours to protect, first and foremost.

A pair of watchful eyes are very important-it can mean the difference between property loss and retention. If we all join together to safeguard our own homes and our neighbor's property, we can protect our community and deter theft, vandalism and other preventable crimes while cultivating safety in our neighborhood.

**If you see something suspicious, please contact API Security:  
808-479-1869. Remember: If you see something, say something!**

## Maintenance Corner

Aloha, residents! Do you need a light replaced? Ohana Military Communities strives to provide a safe, secure, and well-lit environment.

Please submit a work order for any non-operational exterior lights attached to your dwelling or in your neighborhood.



**Need a Light  
Bulb Replaced?**

 'OHANA  
HUNT MILITARY COMMUNITY

 HUNT  
5-STAR SERVICE

# GOT FRIENDS?

*Refer a friend to receive*

# \$500

*It's that easy!*



**Refer your friend to live at Moanalua Terrace!**  
**Offering 2 bedroom homes with enclosed garage.**  
**Receive \$500 when they move in!**

Offer valid for new residents only, for move-ins prior to 04/31/2021

Provide your friend this flyer and write your name here to get your referral: \_\_\_\_\_

*\*Some restrictions apply\**



# Recognized as a 2020 Tree City by the Arbor Day Foundation!

This year, it's Friday, April 30, 2021. Arbor Day is a national holiday created to recognize the importance of trees. The most common way people celebrate Arbor Day is to get together in groups to plant trees.

The Arbor Day Foundation has given Ohana Military Communities recognition as a 2020 Tree City USA! We are proud to create neighborhoods a place that makes the planting and care of trees a priority.



## RSO Corner

Welcome to APRIL! While progress is being made with COVID vaccinations, we urge you to continue to practice safe social distancing, maintain a distance of 6-feet apart from others, and wear your mask. We are all in this together!

We have some fun social media contests lined up for April! We will once again have the Lanai of the Month Contest for the month of April, as well as a handful of other fun online contests, including one titled, "Around the World with OMC," where we invite you to share all your amazing travel photos! Also, as a friendly reminder, if you are PCS-ing, you must give us 28 days notice that you are going to vacate.

Mahalo for being a valued resident, we appreciate you!

*With aloha,*

*Ohana Military Communities*

