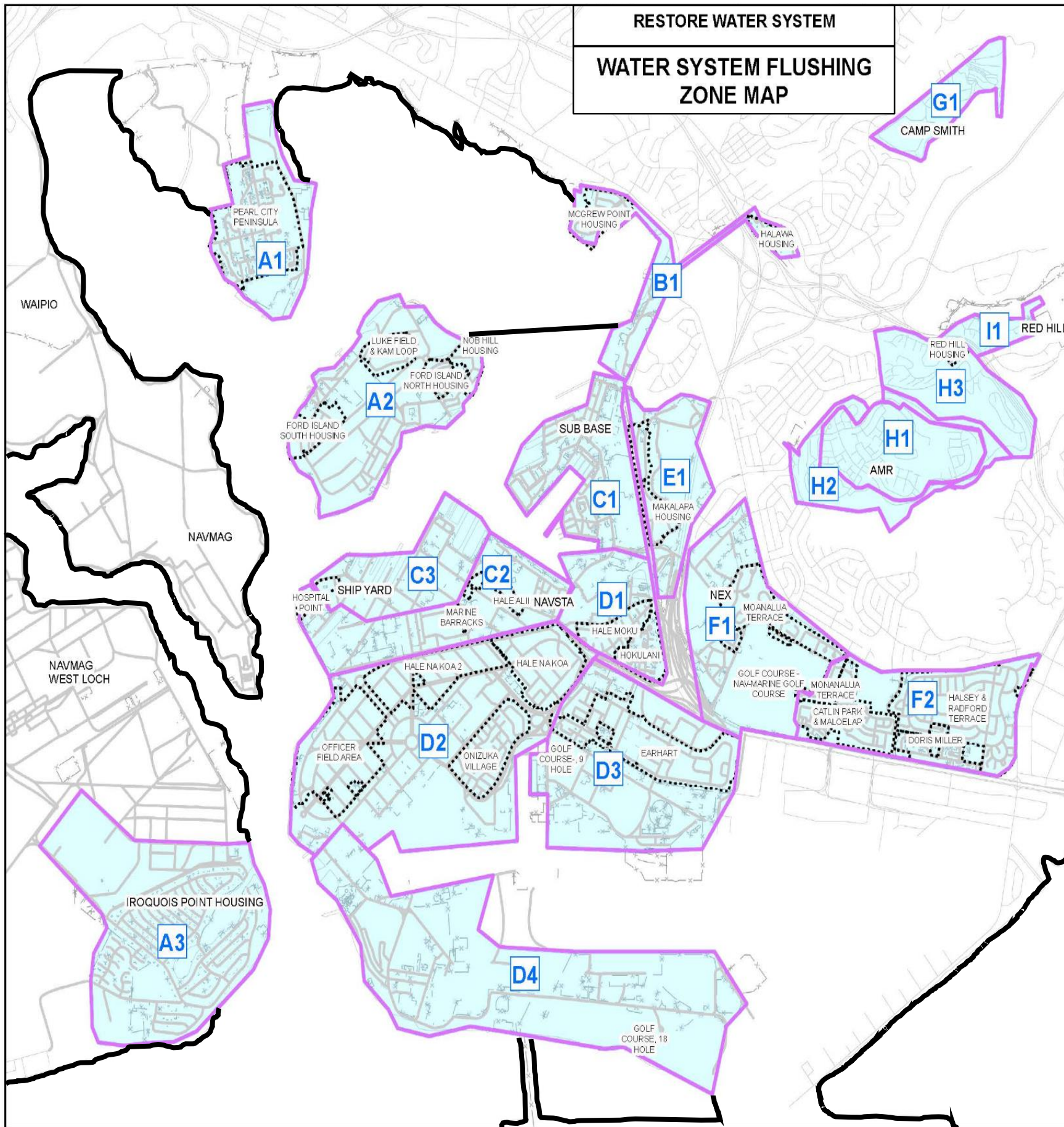


RESTORE WATER SYSTEM

WATER SYSTEM FLUSHING
ZONE MAP

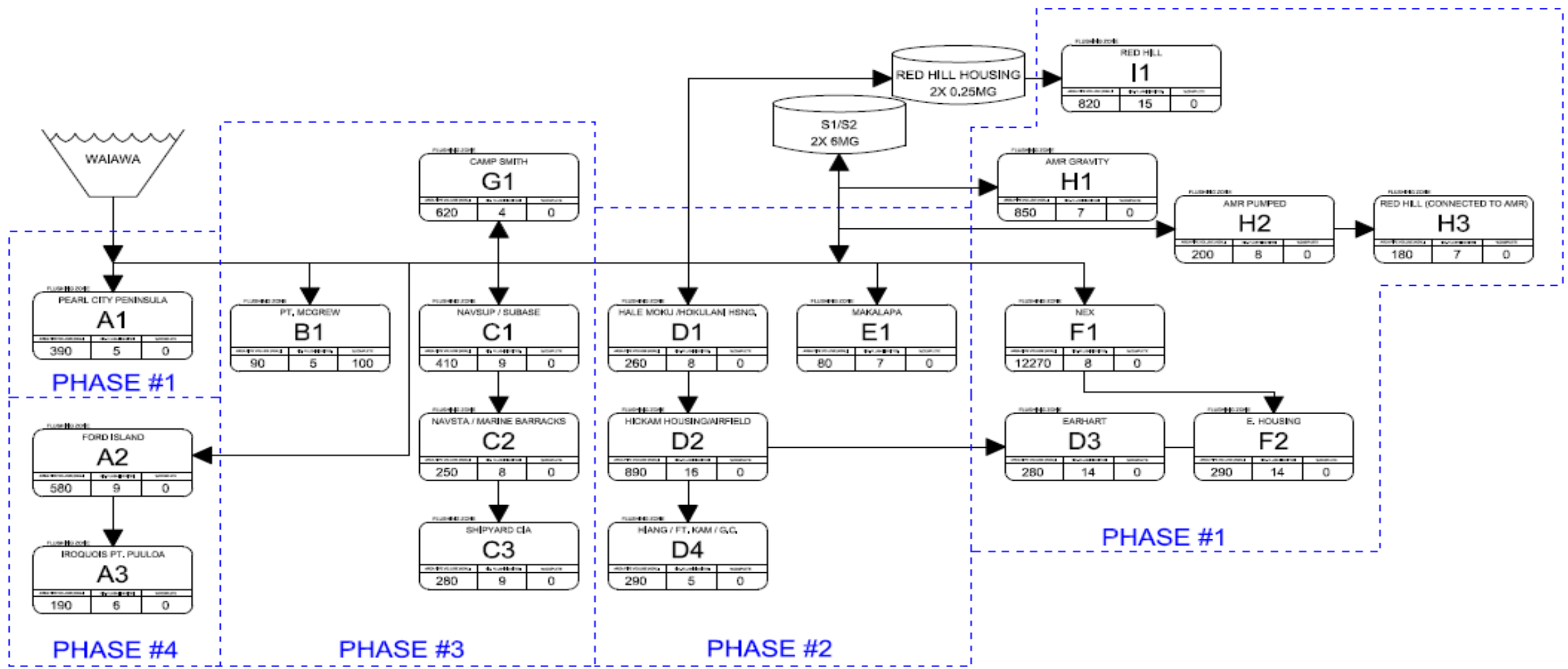
VERSION 6
2000Z 19 DEC



Zone	Community	System Flush and Sample	Home Flush and Sample
A1	Pearl City Peninsula	20 Dec – 26 Dec	27 Dec – 04 Jan
H1 & H2	Aliamanu Military Reservation (AMR)	20 Dec – 03 Jan	31 Dec – 11 Jan
H3 & I1	Red Hill Housing	20 Dec – 03 Jan	31 Dec – 11 Jan
F1	NEX	20 Dec – 06 Jan	07 Jan – 15 Jan
D1	Hale Hokolani	24 Dec – 02 Jan	03 Jan – 09 Jan
D2	Hickam	27 Dec – 05 Jan	06 Jan – 18 Jan
D3	Earhart	31 Dec – 08 Jan	09 Jan – 17 Jan
G1	Camp Smith	01 Jan – 08 Jan	09 Jan – 15 Jan
C1	SUB BASE	02 Jan – 08 Jan	N/A
F2	Moanalua Terrace / Catlin Park / Halsey & Radford Terrace	03 Jan – 09 Jan	10 Jan – 21 Jan
C2	Hale Alii / Marine Barracks / Hospital Point	03 Jan – 11 Jan	12 Jan – 18 Jan
D4	155 th CE/FES	04 Jan – 10 Jan	N/A
E1	Makalapa	04 Jan – 10 Jan	11 Jan – 17 Jan
A2	Ford Island	05 Jan – 11 Jan	12 Jan – 18 Jan
A3	Iroquois Point	06 Jan – 12 Jan	13 Jan – 24 Jan
C3	Shipyards	06 Jan – 12 Jan	13 Jan – 19 Jan
B1	McGrew / Halawa	06 Jan – 13 Jan	14 Jan – 20 Jan

*Sequencing based on system design.

*Please note: All dates are estimates, and sample results will determine the amount of time necessary to complete the flushing.



PEARL CITY PENINSULA

A1		
390	5	0

PT. MCGREW

B1		
90	5	100

CAMP SMITH

G1		
620	4	0

NAVSUP / SUBASE

C1		
410	9	0

HALE MOKU / HOKULANI HSNG,

D1		
260	8	0

MAKALAPA

E1		
80	7	0

NEX

F1		
12270	8	0

EARHART

D3		
280	14	0

E. HOUSING

F2		
290	14	0

HICKAM HOUSING/AIRFIELD

D2		
890	16	0

HANG / FT. KAM / G.C.

D4		
290	5	0

NAVSTA / MARINE BARRACKS

C2		
250	8	0

SHIPYARD CIA

C3		
280	9	0

FORD ISLAND

A2		
580	9	0

ROQUOIS PT. PULLOA

A3		
190	6	0

S1/S2
2X 6MG

RED HILL HOUSING
2X 0.25MG

RED HILL

I1		
820	15	0

AMR GRAVITY

H1		
850	7	0

AMR PUMPED

H2		
200	8	0

RED HILL (CONNECTED TO AMR)

H3		
180	7	0